



TEAMPEGASO



G.S.E.

**Ground
Support
Equipment**

SUMMARY

MOBILE WORKSHOPS - TRUCKS MODEL MAY VARY

▶ Volkswagen Crafter	3
▶ Mercedes Sprinter	5
▶ Doblò Cargo	7

TROLLEYS FOR GOODS TRANSPORT

▶ PT6F - Trolley for goods transport	9
▶ PT6FR - Raised Trolley for goods transport with Nitrogen cylinder	11
▶ 750F - Economy trolley	13

LIFTING SYSTEMS

▶ IDG Lifter	15
--------------	----





TEAMPEGASO

MOBILE WORKSHOP

based on
Volkswagen Crafter

JET WASH TRUCK

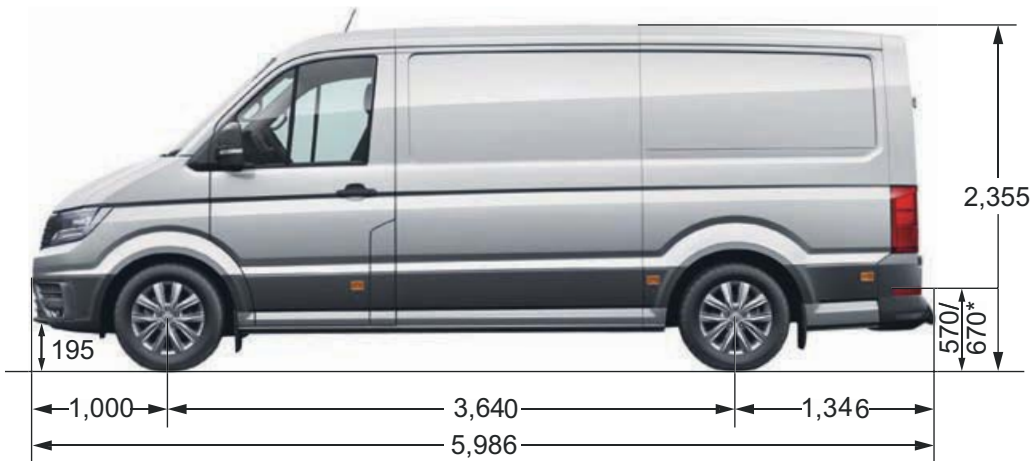


FEATURES

- 16 kW Electrical Generator
- 100 lt 3kW compressor
- 300 lt boiler 65°C
- 45 lt boiler 95°C
- Liquid aspirator 550 lt
- Liquid recovery sheet 10 m x 4 m (40sqm)
- Water pump at 23 lt/min
- Water tank at ambient temperature - 350 lt
- Control panel
- Water and Air tubing roll up
- Low pressure Nitrogen roll up
- Electric wire roll up
- Internal lighting system
- External environment lighting
- Stair storage area
- roof rack
- Airport lighting for traffic integration



3



TOTAL VOLUME	WORKSHOP/OFFICE AREA	TECHNICAL AREA
4,606x1,832x2,189 mm	1,800x1,832x2,189 mm	2,806x1,832x2,189 mm

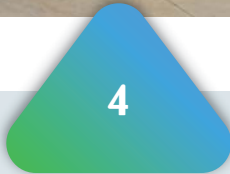
FEATURES

- Desk
- Counter equipped with complete tool drawers, vice, containers and shelves
- Lighting
- No need of external support



TEAMPEGASO

Head Quarter | Loc. Quarto Inferiore 275 | 14100 ASTI | AT | ITALY
 Registered Office | Loc. Croix Noire 73 | 11020 Saint Christophe | AO | ITALY
 info@teampegaso.it | teampegaso@pec.teampegaso.it | www.teampegaso.it

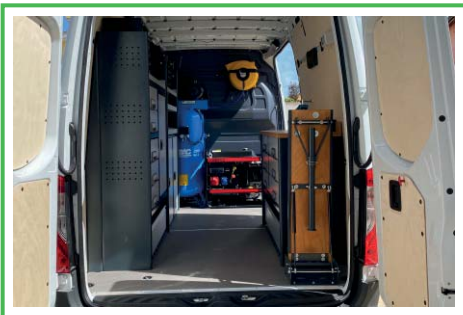




TEAMPEGASO

MOBILE WORKSHOP

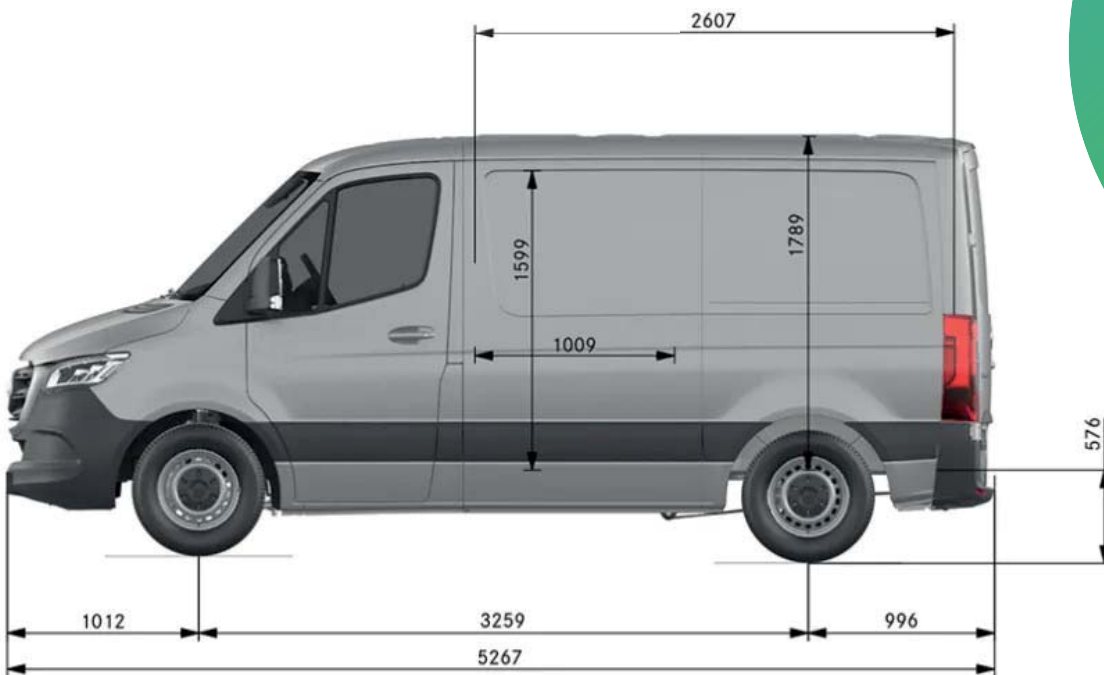
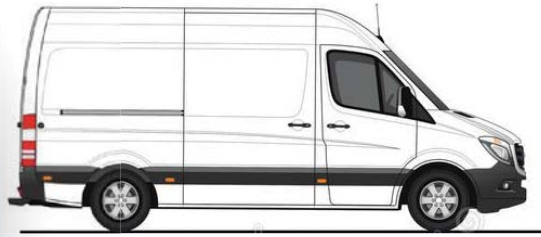
based on
Mercedes Sprinter



FEATURES

- Phenolic floor
- PVC or Wood panels
- Electric generator
- Compressor
- Air piping roll up
- Internal led lighting
- 220V electric system
- Shelves
- Work vice with removable support
- Working desk
- External logos and lighting

5



GROSS WEIGHT	MAX ROOF LOADING CAPACITY	MAX TOWABLE LOAD (BR/N.BR)	OVERALL DIMENSIONS	INTERNAL DIMENSIONS
5,500 Kg	150 Kg	2,000/750 Kg	2.642x5.267x2.175 mm	2.607 x2.732 mm

FLOOR HEIGHT	INTERNAL WIDTH	MAX LOADING DIMENSION (INTERNAL USEFULL DIMENSION DUE TO WHEEL)
572 mm	1.787 mm	1.412 mm

LOADING SURFACE	LOADING VOLUME	TURNING ARCH	TURNING DIAMETER
4.357 m ²	8.8 m ³	13 m	12.2 m



TEAMPEGASO

Head Quarter | Loc. Quarto Inferiore 275 | 14100 ASTI | AT | ITALY
 Registered Office | Loc. Croix Noire 73 | 11020 Saint Christophe | AO | ITALY
 info@teampegaso.it | teampegaso@pec.teampegaso.it | www.teampegaso.it



TEAMPEGASO



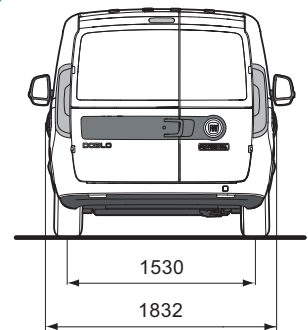
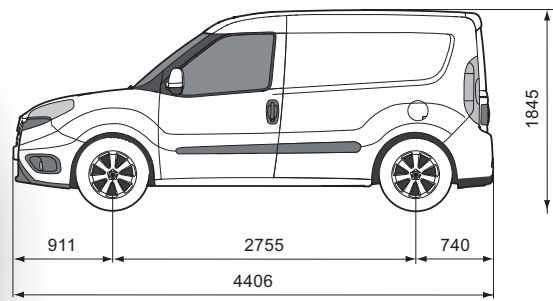
MOBILE WORKSHOP

**based on
Doblò Cargo**

FEATURES

- 220v electric generator
- 1 kW Inverter
- External electrical plug
- Additional battery
- 220v internal plugs
- Internal led lighting
- Office area useful for:
 - a) pc
 - b) printer
 - c) router
- Nitrogen cylinder storage area
- Nitrogen low pressure gas system:
 - a) pressure regulator
 - b) piping roll on
 - c) rapid plugs
- Working area
 - a) Drawers
 - b) Dirty fluids storage area
 - c) Pockets for cylinder
 - d) Recovery tanks for waste liquids
- External lighting
- Roof rack
- Automatic stair carrier
- Tow hook
- Rear Air conditioned area
- External logos and lighting





WHEELBASE	EXTERNAL LENGHT	EXTERNAL WIDTH	EXTERNAL HEIGHT
Da 2,755 a 3,105 mm	Da 4,406 a 49,81 mm	Da 1,832 a 1,872 mm	Da 1,845 a 2,125 mm

LOADING VOLUME

LENGHT	WIDTH
Da 1,820 a 2,300 mm	Da 1,714 a 1,818 mm
HEIGHT	LOADING HEIGHT
Da 368 a 1,550 mm	Da 545 a 910 mm

LOAD COMPARTMENT CAPACITY

VOLUME	TOTAL CAPACITY
3,4 - 5,4 m ³	Da 705 a 1,035 m ³



TEAMPEGASO

Head Quarter | Loc. Quarto Inferiore 275 | 14100 ASTI | AT | ITALY
 Registered Office | Loc. Croix Noire 73 | 11020 Saint Christophe | AO | ITALY
 info@teampegaso.it | teampegaso@pec.teampegaso.it | www.teampegaso.it



TEAMPEGASO

PT6F

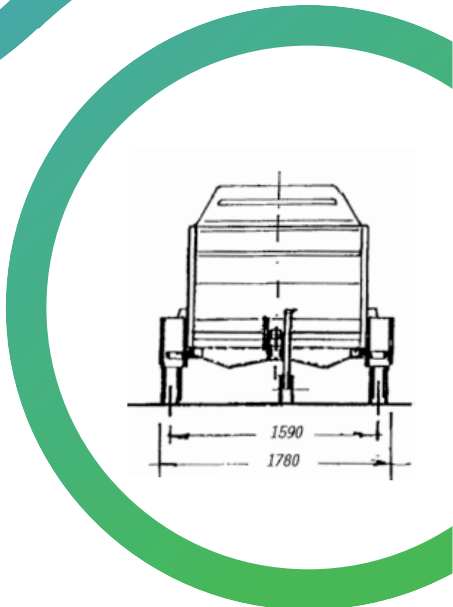
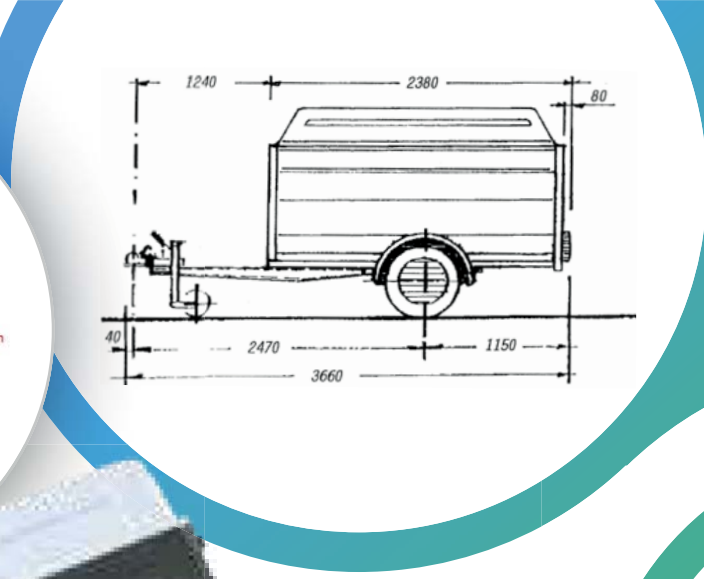
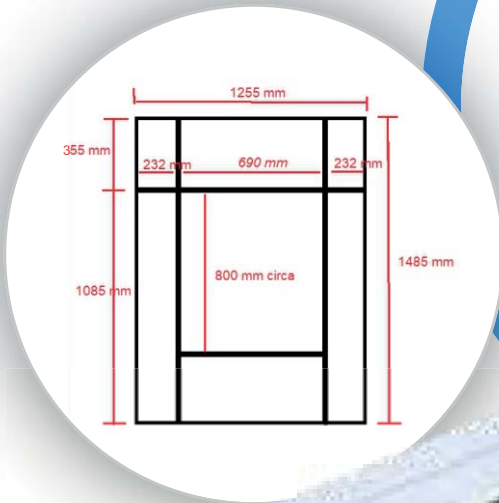
Trolley for
goods transport



Features

- Rear edge reinforcement to increase the capacity and slope facilitation to facilitate the loading and unloading of goods with:
 - a) new hinges of the lower side
 - b) adoption of aluminum panels
 - c) 4 mm thick final sheet
 - d) central sheet metal to eliminate the step between the side and the floor
- Internal sides reinforcement with:
 - a) adoption of horizontal bars
- Feet for parking
 - a) installation n. 2 or 4 feet for prolonged parking
- Internal document pocket
- Logos and external signs





MAX WEIGHT	Payload	MAX DIMENSION	LOADING VOLUME	LOADING HEIGHT	WHEEL
750/600/450 Kg	420/270/120 Kg	366x178x185h cm	226x130x143h cm	38 cm	155 R13

FEATURE

- Profiled frame in hot galvanized thick sheet metal
- Loading surface in non-slip marine plywood
- Large diameter automotive-type wheels
- Sturdy ring hooks to securely attach any type of load
- Hot-dip galvanized parking wheel with bearing for minimum lifting effort



TEAMPEGASO

Head Quarter | Loc. Quarto Inferiore 275 | 14100 ASTI | AT | ITALY
 Registered Office | Loc. Croix Noire 73 | 11020 Saint Christophe | AO | ITALY
 info@teampegaso.it | teampegaso@pec.teampegaso.it | www.teampegaso.it



TEAMPEGASO

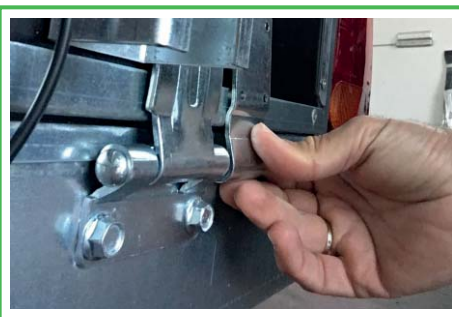
PT6F

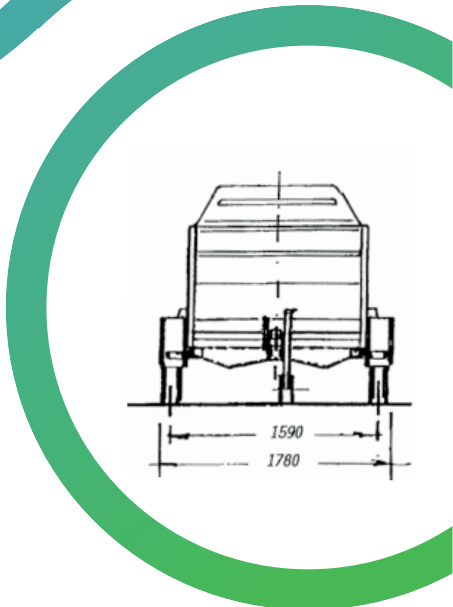
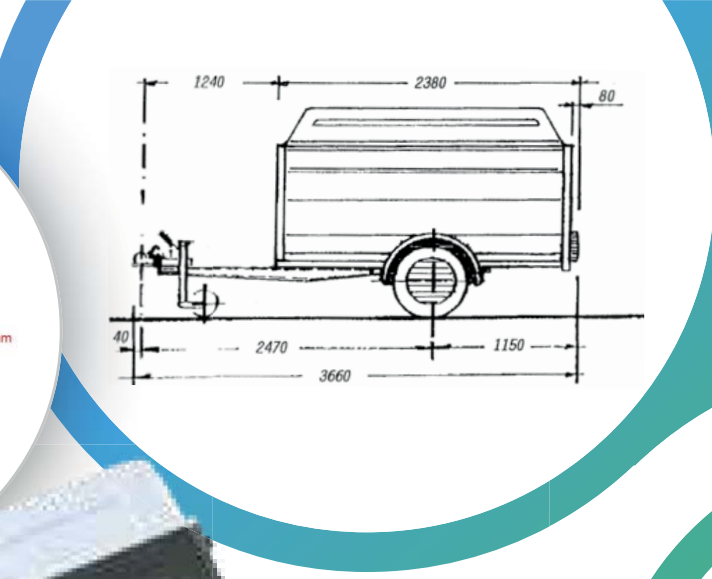
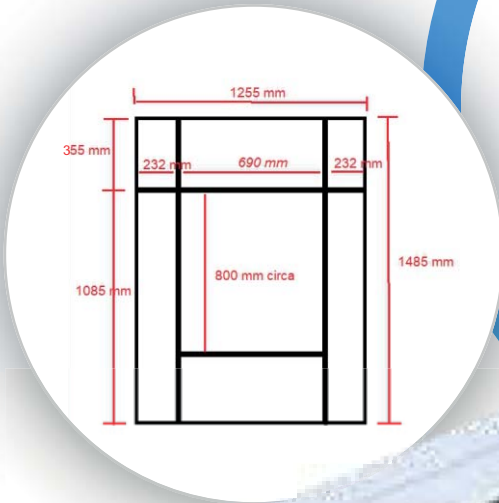
**Raised Trolley
for goods transport
with Nitrogen cylinder**



FEATURES

- Rear edge reinforcement to increase the capacity and slope facilitation to facilitate the loading and unloading of goods with:
 - a) new hinges of the lower side
 - b) adoption of aluminum panels
 - c) 4 mm thick final sheet
 - d) central sheet metal to eliminate the step between the side and the floor
- Internal sides reinforcement with:
 - a) adoption of horizontal bars
- Height variation of the sides with:
 - a) adoption of extension sides based on the required height
- Feet for parking
 - a) installation n. 2 or 4 feet for prolonged parking
- High and low pressure nitrogen system installation:
 - a) high pressure nitrogen regulator
 - b) low pressure nitrogen regulator
 - c) low pressure nitrogen reel of 25 meters
 - d) quick couplings and high pressure nitrogen pipes
 - e) housing nitrogen cylinder/s
- Internal document pocket
- Logos and external signs





MAX WEIGHT	PAYLOAD	MAX DIMENSION	LOADING VOLUME	LOADING HEIGHT	WHEEL
750/600/450 Kg	420/270/120 Kg	366x178x225h cm	226x130x183h cm	38 cm	155 R13

FEATURES

- Profiled frame in hot galvanized thick sheet metal
- Loading surface in non-slip marine plywood
- Large diameter automotive-type wheels
- Sturdy ring hooks to securely attach any type of load
- Hot-dip galvanized parking wheel with bearing for minimum lifting effort



TEAMPEGASO

Head Quarter | Loc. Quarto Inferiore 275 | 14100 ASTI | AT | ITALY
 Registered Office | Loc. Croix Noire 73 | 11020 Saint Christophe | AO | ITALY
 info@teampegaso.it | teampegaso@pec.teampegaso.it | www.teampegaso.it



TEAMPEGASO

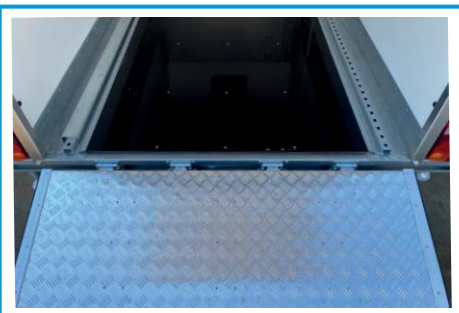
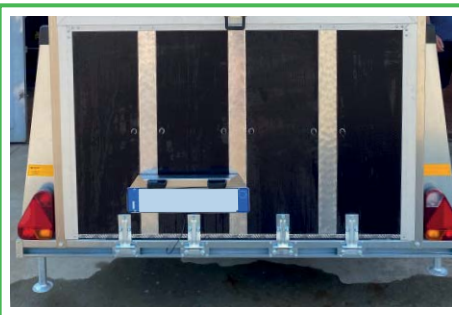
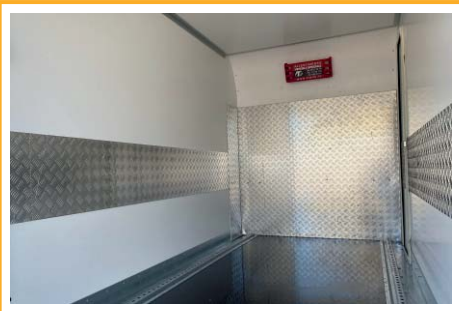
750F

**Trolley
economy**

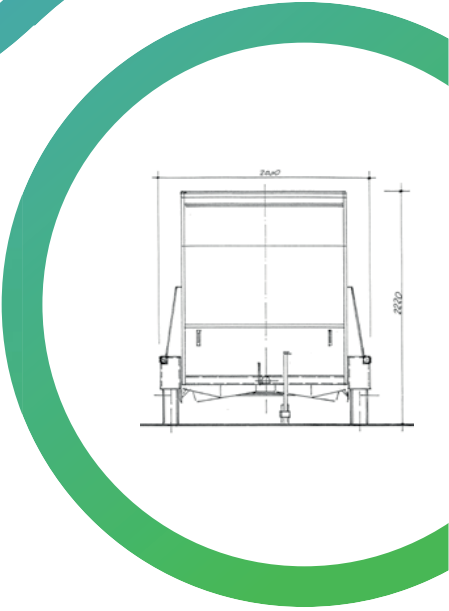
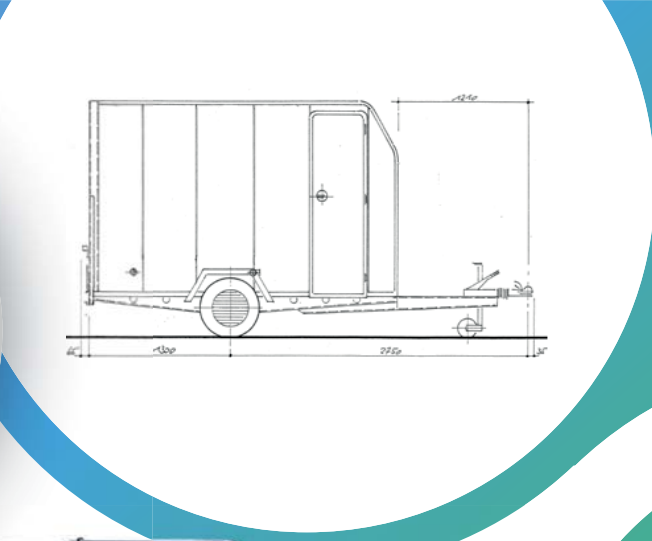


FEATURES

- Rear edge reinforcement to increase the capacity and slope facilitation to facilitate the loading and unloading of goods with:
 - a) new hinges of the lower side
 - b) adoption of wooden panels
 - c) new side closure
 - d) final sheet thickness 0.4 mm
 - e) central sheet metal to eliminate the step between the side and the floor
- Internal sides reinforcement with:
 - a) shaped paneling in almond-shaped aluminum
- Elimination of glazing / windows due to solar radiation and internal temperature with:
 - a) adoption of shaped resin panels
- Feet for parking
 - a) installation n. 4 feet for prolonged parking
- Internal document pocket
- Logos and external signs



13



MAX WEIGHT	PAYLOAD	MAX DIMENSION	LOADING VOLUME	LOADING HEIGHT	WHEEL
1,000/750 Kg	520/270 Kg	415x200x225h cm	280x152x180h cm	42 cm	155 R13

FEATURES

- Loading surface in non-slip marine plywood
- Aluminum loading ramp to climb on any vehicle
- Insulated fiberglass walls
- Side inspection door
- Profiled frame in hot galvanized thick sheet metal
- Large diameter automotive-type wheels
- Hot-dip galvanized parking wheel with bearing for minimum lifting effort
- Rear parking feet



TEAMPEGASO

Head Quarter | Loc. Quarto Inferiore 275 | 14100 ASTI | AT | ITALY
 Registered Office | Loc. Croix Noire 73 | 11020 Saint Christophe | AO | ITALY
 info@teampegaso.it | teampegaso@pec.teampegaso.it | www.teampegaso.it



TEAMPEGASO

IDG LIFTER

**Lifting
system**



P/N TP_ILS_001_LT

- Lifting system for CFM56, PW1100 on Airbus A3XX
- Configurable for all Airbus aircraft
- Made of galvanized steel, equipped with braking wheels and with the following characteristics:
 - a) minimum lifting height: 25 cm
 - b) maximum lifting height: 110 cm
 - c) weight: 70 kg
 - d) maximum lifting load: 500 kg
 - e) housing cradle made of Teflon
- The system will be applicable on:
 - a) A320 for handling of CFM56
 - b) IAEV2500
 - c) LEAP1A
 - d) Pw1100
- Supplied with:
 - metallic parts
 - certificate of conformity



TEAMPEGASO

Head Quarter | Loc. Quarto Inferiore 275 | 14100 ASTI | AT | ITALY
Registered Office | Loc. Croix Noire 73 | 11020 Saint Christophe | AO | ITALY
info@teampegaso.it | teampegaso@pec.teampegaso.it | www.teampegaso.it

15